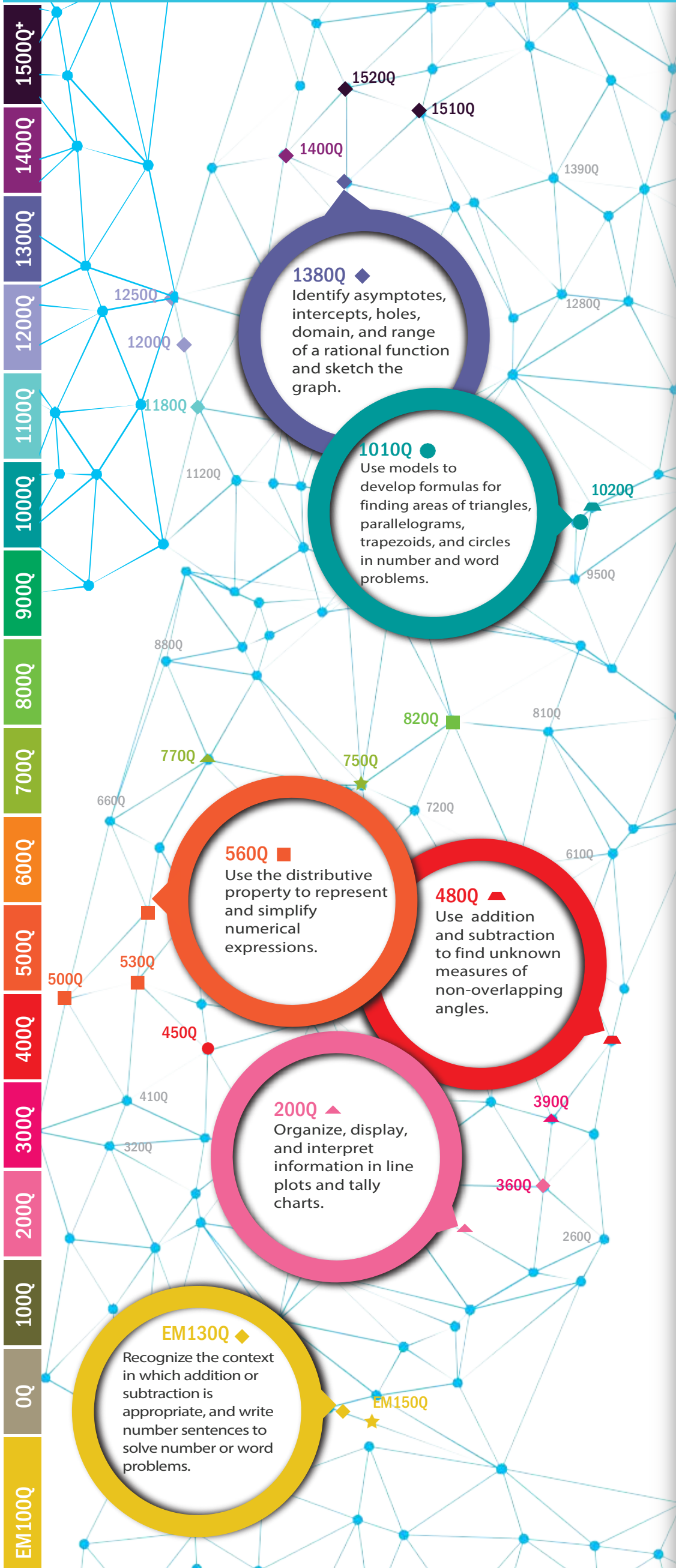




QSCs ORGANIZED BY QUANTILE® MEASURE

EXEMPLARS FROM OVER 500 QUANTILE SKILLS & CONCEPTS



- QUANTILE MEASURE
- 1520Q** ◆ Identify continuous and discontinuous functions and locate points of discontinuity.
 - 1510Q** ◆ Graph tangent, cotangent, secant, and cosecant functions and identify the domain, range, period, and asymptotes of the function.
 - 1400Q** ◆ Use the definition of a hyperbola to identify characteristics, write an equation and graph the relation.
 - 1380Q** ◆ Identify asymptotes, intercepts, holes, domain, and range of a rational function and sketch the graph.
 - 1250Q** ◆ Identify the undefined values of rational algebraic expressions.
 - 1200Q** ◆ Identify and interpret zeros of a quadratic function using factoring in algebraic and word problems.
 - 1180Q** ◆ Use and interpret function notation in number and word problems; determine a value of the function given an element of the domain.
 - 1020Q** ▲ Define and identify complementary and supplementary angles.
 - 1010Q** ● Use models to develop formulas for finding areas of triangles, parallelograms, trapezoids, and circles in number and word problems.
 - 820Q** ■ Rewrite or simplify algebraic expressions including the use of the commutative, associative, and distributive properties, and inverses and identities, in number and word problems.
 - 770Q** ▲ Organize, display, and interpret information in stem-and-leaf plots.
 - 750Q** ★ Describe the effect of operations on size and order of numbers.
 - 560Q** ■ Use the distributive property to represent and simplify numerical expressions.
 - 530Q** ■ Estimate and compute products of whole numbers with multi-digit factors.
 - 500Q** ■ Use order of operations including parentheses and other grouping symbols to simplify numerical expressions.
 - 480Q** ▲ Use addition and subtraction to find unknown measures of non-overlapping angles.
 - 450Q** ● Determine the area of rectangles, squares, and composite figures using nonstandard units, grids, and standard units in number and word problems.
 - 390Q** ▲ Organize, display, and interpret information in tables and graphs (frequency tables, pictographs, and line plots).
 - 360Q** ◆ Write addition and subtraction sentences that represent a number or word problem; solve.
 - 200Q** ▲ Organize, display, and interpret information in line plots and tally charts.
 - EM130Q** ◆ Recognize the context in which addition or subtraction is appropriate, and write number sentences to solve number or word problems.
 - EM150Q** ★ Describe, compare and order objects using mathematical vocabulary.

GLOSSARY

Emerging Mathematician (EM) A code that comes before a Quantile measure of below zero for material and student measures at early levels.

Quantile Skill and Concept (QSC) The description of a skill and its Quantile measure.



For more information and free resources, visit www.Quantiles.com.

◆ ALGEBRA & ALGEBRAIC THINKING

★ NUMBER SENSE

■ NUMERICAL OPERATIONS

● MEASUREMENT

▲ GEOMETRY

▲ DATA ANALYSIS, STATISTICS & PROBABILITY