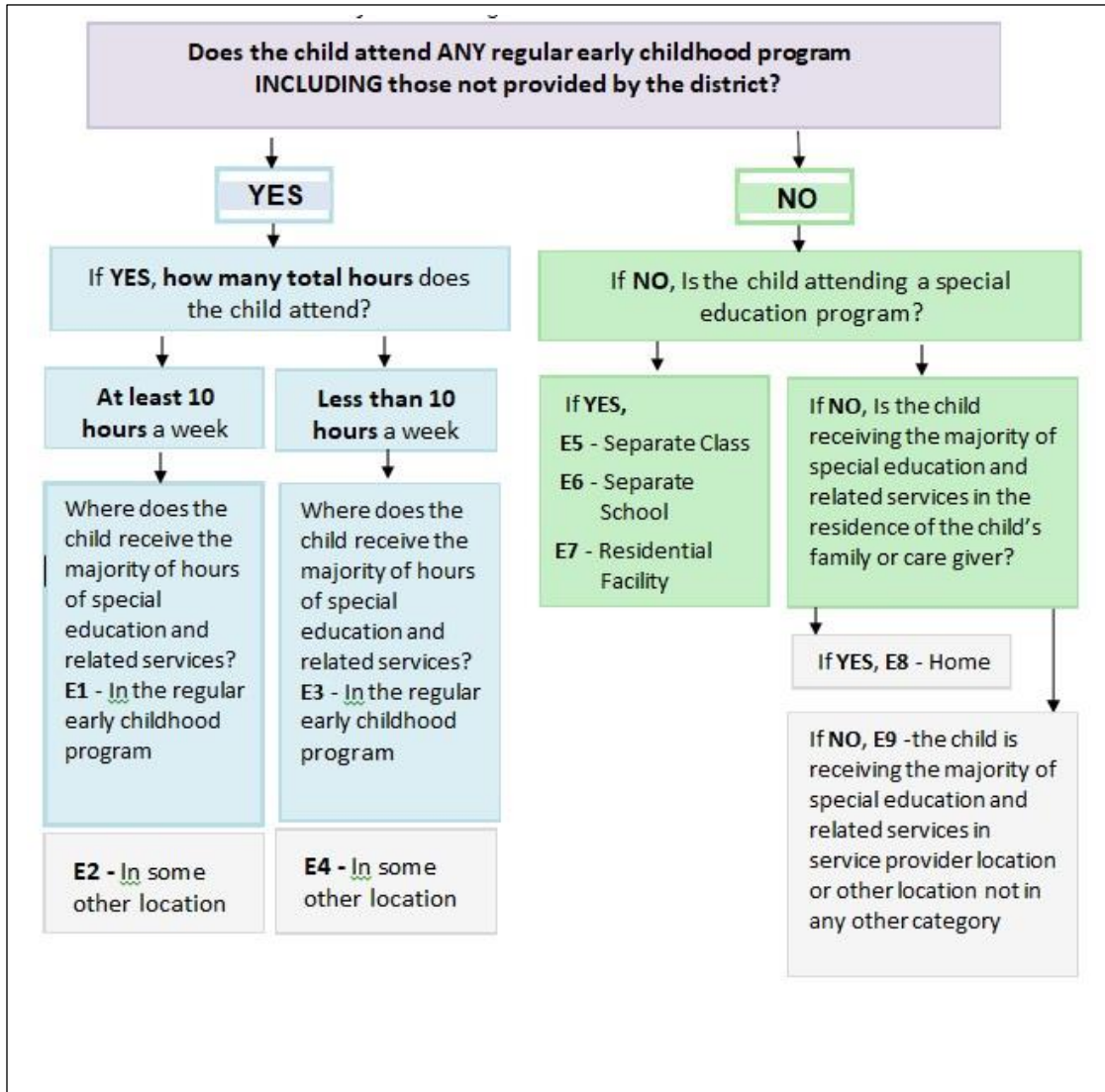


## NEVADA Decision Tree - Coding Educational Environments

Children Ages 3 - 5 with IEPs (including 5 year olds in Kindergarten)

*Report each child in only one category.*

*Please refer to state guidance and the Protocol Form*



Ask the family if the child attends ANY regular education preschool program including those not provided by the district which includes:

- any regularly scheduled program that has a consistent schedule and curriculum such as child care, private preschool, etc. and must be at least 50% typically developing peers.

**If YES, the child does attend a regular early childhood program:**

- Determine the total # of hours the child is in the regular education program. Is it 10 hours or more per week?
  - If yes, then determine where the child receives the majority (50% or more) of hours of special education and related services and choose [E1] or [E2].
- If the total number of hours the child is in the regular education programs is less than 10 hours per week,
  - Determine where the child receives the majority (50% or more) of hours of special education and related services and choose [E3] or [E4].

**If NO, the child does not attend a regular early childhood program, does the child attend a special education program?**

- If YES, the child does attend a special education program then determine if it is a
  - Separate Class such as self contained setting [E5]
  - Separate School [E6]
  - Residential Facility [E7]
- If NO, the child does not attend a special education program,
  - Determine if the child is receiving the majority of special education and related services in the residence of the child's family or care giver? If YES, choose [E8]-Home.
  - If NO, the child does not attend a special education program and the child is receiving the majority of special education and related services in the service provider location (such as speech therapy) or other location not in any other category then choose [E9].

**For an electronic version of the decision tree please go to: [B6 Tools Idea Data](#)**