

Steve Sisolak
Governor

Jhone M. Ebert
*Superintendent
of Public
Instruction*



Southern Nevada Office
2080 East Flamingo Rd,
Suite 210
Las Vegas, Nevada
89119-0811
(702) 486-6458
Fax: (702) 486-6450

STATE OF NEVADA
DEPARTMENT OF EDUCATION
700 E. Fifth Street | Carson City, Nevada 89701-5096
Phone: (775) 687-9200 | www.doe.nv.gov | Fax: (775) 687-9101

March 5, 2020

To: Felicia Ortiz, President, State Board of Education

From: Heidi Haartz, Deputy Superintendent, Business and Support Services

Subject: Report to the State Board of Education: Class Size Reduction Variances and Justifications, 1st Quarter Fiscal Year 2021 (July 1, 2020- September 30, 2020)

Introduction

Pursuant to Nevada Revised Statutes (NRS) 388.700(5), the State Board of Education is required to submit a quarterly report on class size ratios in the elementary grades and each variance requested by a school district when the target ratio is exceeded during the preceding quarter to the Interim Finance Committee (IFC). For the purposes of evaluating the effectiveness of the Class-Size Reduction (CSR) program, the report must include an identification of each elementary school for which a variance was granted, as well as the specific justification for the variance. Charter schools are explicitly excluded from the provisions of the class size reduction program. Per NRS, each biennium the legislature allocates funding for school districts to aid in the effort to reduce class size ratios in the elementary grades. Annually, school districts are required to submit a plan with the Nevada Department of Education (NDE), detailing how the awarded funds will be used to reduce class sizes.

There are two types of CSR funded plans in use during the 2019-2021 biennium:

- The regular plan focuses on pupil-teacher ratios of 16 pupils per licensed teacher in kindergarten, 16 pupils per licensed teacher in first and second grades, and 18 pupils per licensed teacher in third grade. These ratios are prescribed in NRS 388.700, subsection 1(a).
- The alternative plan, established by the legislature in 2005, allows ratios of 16 pupils per licensed teacher in kindergarten, 22 pupils per licensed teacher in first through third grades, and 25 pupils per licensed teacher in fourth grade. The ratio of 25 pupils per

licensed teacher extends to fifth and sixth grades, if the fifth and sixth grades are included in the elementary school. The alternative plan may only be implemented in school districts whose population is less than 100,000. This program is defined in NRS 388.720.

School districts are required to report quarterly to NDE on the average daily enrollment of pupils and the ratios of pupils per licensed teacher for each grade identified under the plan implemented by the district per NRS 388.725 on a quarterly basis. Beginning in 2013, each school that exceeds the target pupil-teacher ratio must request a variance for the next quarter of the school year. Pursuant to NRS 388.700(4), the State Board may grant a variance to a school district for good cause.

Senate Bill 555 (SB 555) section 14.1, provides funding for school districts to reduce ratios from the base ratios established in the three years prior to the start of the CSR program in 1991, in first through third grades only. The funded target class size ratios are 17 pupils per licensed teacher in grades 1 and 2, and 20 pupils per licensed teacher in grade 3. In SB 555 section 15 provides funding for a minimum of 1,911 teachers to help school districts attain the required ratios. It is important to note that funding is allocated to school districts to meet required ratios at the district level, not the individual school level. Additionally, SB 555 allows any remaining funding after the initial allocation to be allocated to the lowest-performing schools with variances.

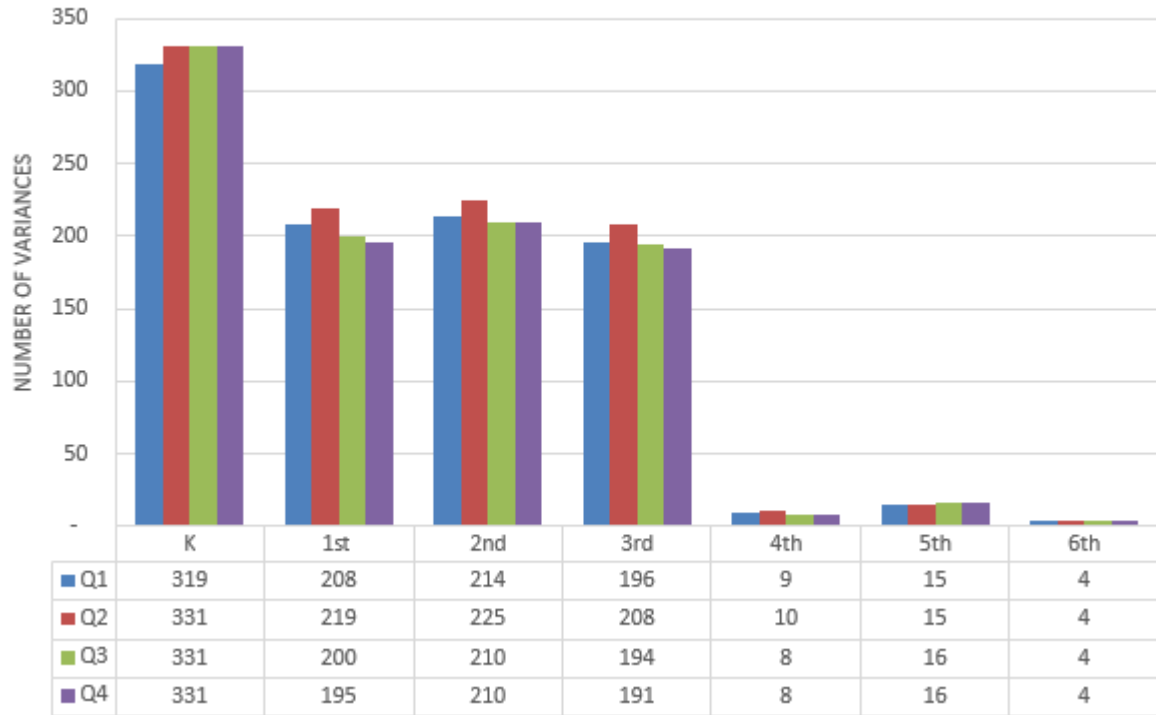
Summary

This report provides a list of class size ratio variances requested by each school district at the school and grade level. Additionally, included is a breakdown of the number of variances at the 1- and 2- star school levels for each school district. Each variance requested must include a justification for the variances and the plan of action the school district will take to reduce the ratio of pupils per class as required by Assembly Bill 304 (2019). It is important to note, that when calculating the class size ratio, only licensed personnel who teach core curriculum classes are used in the calculation. Teachers of art, music, physical education, special education, librarians, and specialists cannot be included in the calculation.

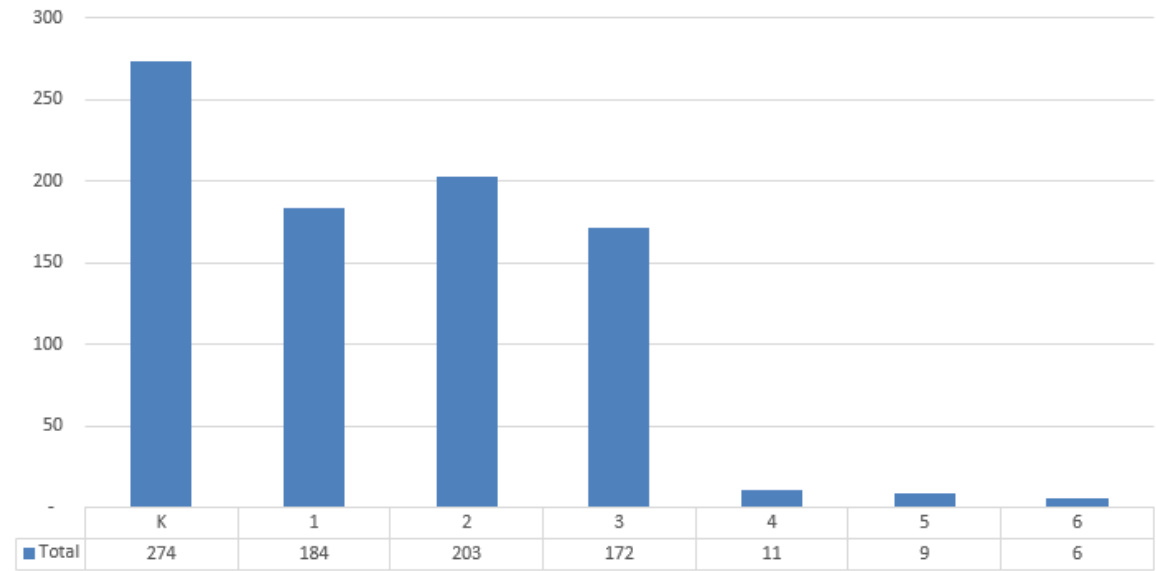
Statewide, enrollment experienced a downward trend in FY 2021 compared to the fourth quarter of FY2020, decreasing by 11,441 pupils, from 135,139 to 123,698. Similarly, variances experienced a decline, 955 to 859 in grades kindergarten through sixth. The number of kindergarten variances decreased by 57, from the prior year fourth quarter with a total of 274. With the decrease in the total number of variances requested, the statewide average kindergarten class size decreased slightly to 19 compared to the previous quarter. Statewide average class size ratio was 19; this is based on 123,698 students and 6,418 teachers.

All grades except fourth grade, experienced decreases in the number of variances requested compared to the fourth quarter of FY20, with decreases of 57 in kindergarten, 12 in first grade, 6 in third grade, 21 in fifth grade, and 7 in sixth grade. The total average decrease was approximately 11%. Kindergarten experienced the most significant decrease of 17.2%, which was the result of a decrease from 331 variances to 274. Comparatively, third-grade variances decreased by 19, or 11%, from 191 to 172. The chart below provides a side-by-side comparison of the variance requests for first quarter through fourth quarter FY20 as well as a table for the first quarter of FY21.

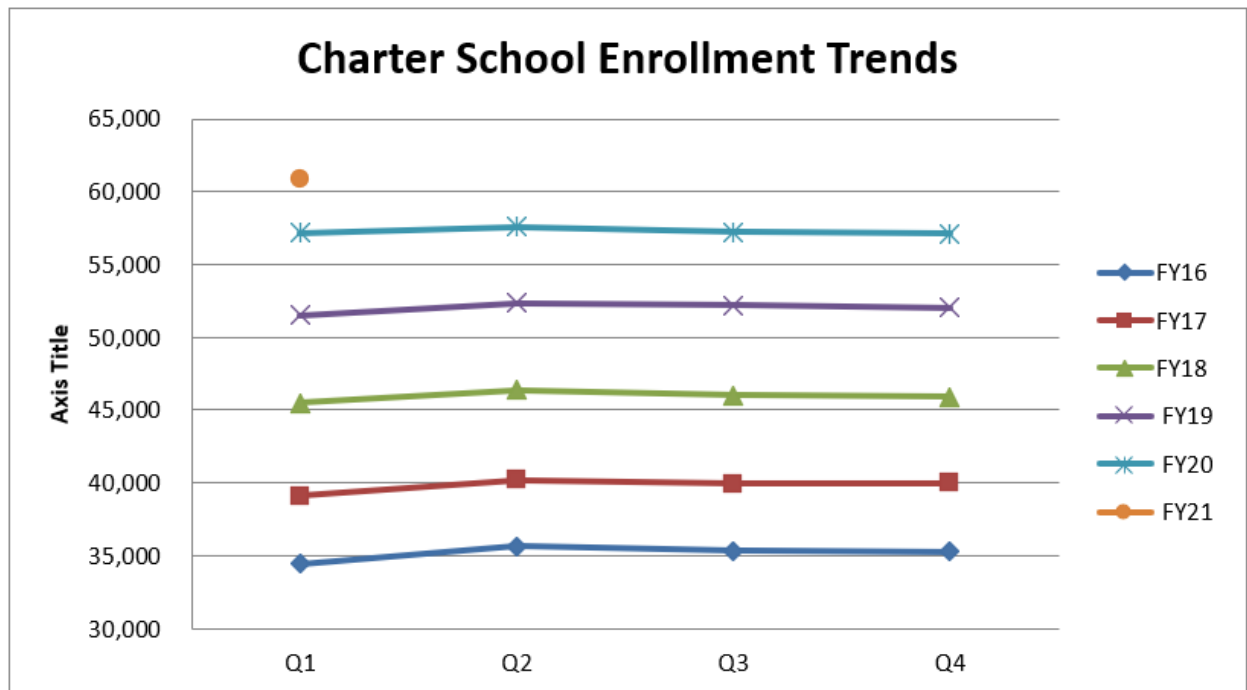
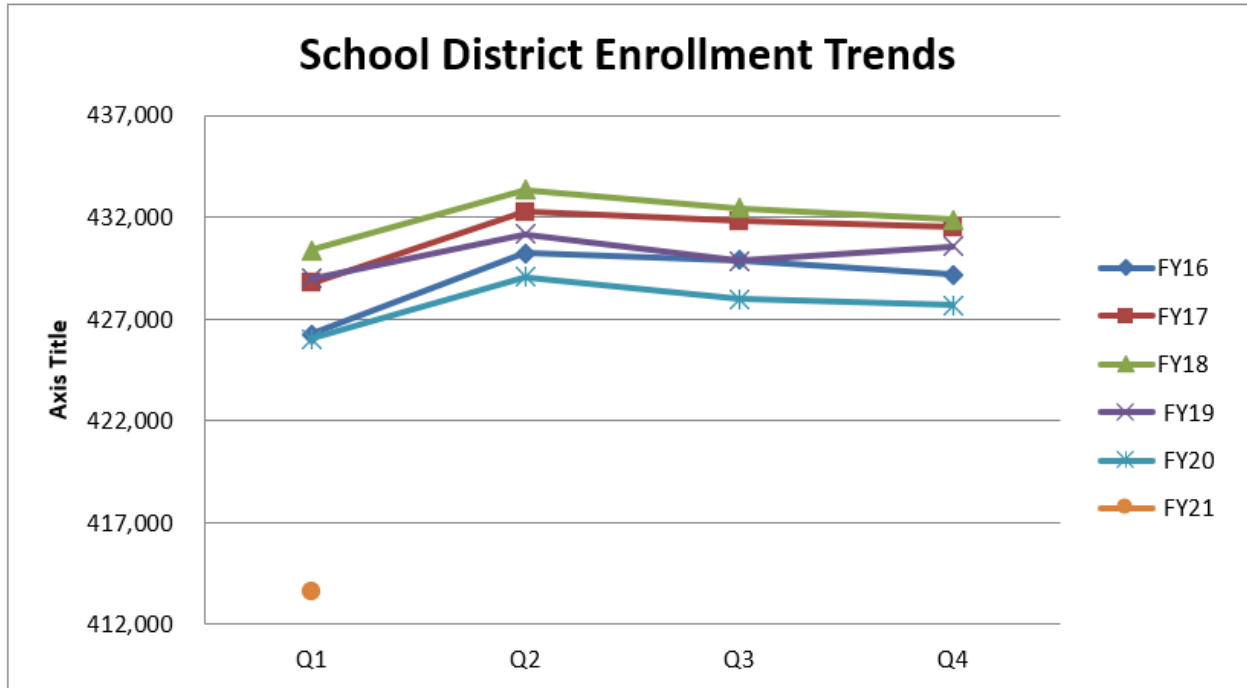
COUNT OF VARIANCE REQUESTS FY20



COUNT OF VARIANCES FY21 Q1



In Q1 FY 21, the state experienced lower enrollment growth at the school district-level and increased enrollment at the charter school level. Based on audited FY20 quarterly average daily enrollment reports, district-level reported enrollment declined an average of 0.61% across all grades compared to FY20. Meanwhile, charter school enrollment grew nearly 10.3% during the same time period, as seen in the charts below.



Analysis of Variances

During the first quarter of FY21, 341 elementary schools reported a grade level exception and exceeded the target ratio associated with the respective district plan. Based on 370 reporting schools, this equates to 92% of the elementary schools experiencing a variance. However, when excluding the number of kindergarten variances, this percentage drops to 80% of schools reporting a grade level variance. The table below lists the number of variances requested by grade for each district.

Count of Variances by Grade

District Name	K	1	2	3	4	5	6	Total
Carson	6	0	0	1	0	1	0	8
Churchill	1	0	0	0	0	0	0	2
Clark	178	143	158	135	0	0	0	614
Douglas	7	2	1	1	2	1	1	15
Elko	6	1	0	0	2	1	1	11
Esmeralda	0	0	0	0	0	0	0	0
Eureka	1	0	0	0	0	0	0	1
Humboldt	5	1	1	0	0	1	0	8
Lander	1	0	0	0	0	0	0	1
Lincoln	1	2	2	1	0	0	0	6
Lyon	7	2	0	3	5	3	4	24
Mineral	1	0	1	0	0	0	0	2
Nye	7	4	5	3	2	2	0	23
Pershing	2	1	1	1	0	0	0	5
Storey	1	0	0	2	0	0	0	3
Washoe	48	28	33	23	0	0	0	132
White Pine	2	0	1	1	0	0	0	4
Grand Total	274	184	203	172	11	9	6	859

Upon a closer review of the data, 149, or 45%, of the elementary schools with a kindergarten variance had class sizes less than 21 pupils to 1 licensed teacher, meaning that nearly half of the schools exceeded the target ratio by five or fewer pupils. The largest kindergarten class size was 36 pupils to 1 licensed teacher, while the smallest kindergarten class size was an average of 4 pupils to 1 licensed teacher.

Particular attention is provided to kindergarten class size ratios due to the impact of legislative changes in recent years that resulted in the elimination of kindergarten class size reduction funding and a simultaneous change in the target ratio from 21 pupils to 1 licensed teacher to 16 pupils to 1 licensed teacher. As a result, the number of variances requested drastically increased. The table below summarizes the number of schools with variances by district for all grades.

Number of Elementary Schools with a Variance

School District	Total Number of Schools (All-Star Ratings)	Total Number of Schools with Variances	% of Total Schools with Variances	Number of Schools with a Variance Excluding Kindergarten	% of Schools with a Variance Excluding Kindergarten
Carson	6	6	100%	2	33%
Churchill	3	2	66%	1	33%
Clark	225	219	97%	198	88%
Douglas	7	7	100%	7	100%
Elko	13	8	61%	6	46%
Esmeralda	3	0	0%	0	0%
Eureka	2	1	50%	0	0%
Humboldt	9	6	56%	3	33%
Lander	2	1	50%	0	0%
Lincoln	4	3	50%	2	50%
Lyon	12	10	83%	9	75%
Mineral	2	2	100%	1	50%
Nye	11	9	82%	6	55%
Pershing	2	2	100%	2	100%
Storey	2	2	100%	2	100%
Washoe	63	60	98%	40	63%
White Pine	4	3	50%	1	25%
Total	370	341	94%	280	76%

When reviewing first through sixth-grade class sizes, 630, or 66%, of the class size variances reported exceeding the target by fewer than five pupils. In districts that chose to implement the regular plan, 294 classes exceeded the target ratio by more than five pupils. The largest class size ratio reported was in the second grade: 37 pupils to 1 licensed teacher at James Gibson and Eva Simmons Elementary Schools in the Clark County School District. In districts that chose to implement the alternative ratio, 31 classes exceeded the target ratio by more than five pupils. The largest class size ratio reported was 32 at the fourth-grade level in Lyon County School District at Dayton Elementary School and the fifth-grade level at Floyd Elementary School in Nye County School District.

When reviewing class size ratio variances, eleven school districts have variances in 1- and 2-star schools based on the most recent Nevada Educator Performance Framework (NEPF) ratings published in September of 2019. Due to waivers approved in FY20 as a result of COVID-19 challenges, the release of updated star ratings were delayed, and instead the 2019-star ratings were used as a proxy for FY21 analysis of variances. Of the 165 1- and 2-star elementary schools included in the quarterly report, 155 of the schools have variances, with a total of 367-grade level variances. Kindergarten accounts for 140 of the variances, with first and second grade each accounting for 74 and 77 of the variances respectively. Finally, third grade accounts for 62 of the variances, and fourth through sixth makes up the remaining 14 variances.

Underperforming Schools with a Grade Level Variance

School District	Total Number of Schools (All Ratings)	Total Number of 1- and 2-Star Elementary Schools	Number of 1- and 2-Star Schools with Variances	% of 1- and 2-Star schools with Variances	Total Number of Variances
Carson	6	0	0	0%	0
Churchill	3	0	0	0%	0
Clark	225	109	108	99%	108
Douglas	7	0	0	0%	0
Elko	13	7	5	71%	5
Esmeralda	3	1	0	0%	0
Eureka	2	1	1	100%	1
Humboldt	9	4	2	50%	2
Lander	2	1	1	100%	1
Lincoln	4	0	0	0%	0
Lyon	12	9	7	78%	7
Mineral	2	1	1	100%	1
Nye	11	6	6	100%	6
Pershing	2	1	1	100%	1
Storey	2	0	0	0%	0
Washoe	63	23	23	100%	23
White Pine	4	0	0	0%	0
Total	370	163	156	96%	156

District-Level Overview of Class Size Ratios

Based on the first-quarter reports, 12 of the 17 districts reported class size ratio variances at the district level. Of the 17 districts, 11 of the districts exceeded the target class size ratio at the district level in kindergarten only. Clark County was the only school district to exceed the target ratio at each grade level at the district level. The largest deviation from the target was in the kindergarten grade level, where a 23:1 ratio was reported in the Douglas County School District.

District-Level Class Size Ratios

District Name/Plan	K	1	2	3	4	5	6
Carson-Alt	21	20	20	21	21	23	N/A
Churchill-Alt	19	18	19	23	24	22	N/A
Clark-Reg	20	19	20	22	N/A	N/A	N/A
Douglas-Alt	23	23	22	24	26	25	29
Elko-Alt	17	19	18	18	21	22	21
Esmeralda-N/A	10	4	9	5	6	8	5
Eureka-Alt	19	10	12	9	12	13	15
Humboldt-Alt	16	18	14	14	18	12	14
Lander-Alt	20	12	11	12	21	N/A	6
Lincoln-Reg	14	16	15	15	N/A	N/A	N/A
Lyon-Alt	17	18	17	21	26	24	24
Mineral-Alt	16	17	21	20	19	19	11
Nye-Alt	16	19	19	17	19	19	N/A
Pershing-Reg	17	17	20	19	18	22	N/A
Storey-Alt	14	19	20	23	22	24	N/A
Washoe-Reg	18	17	17	19	N/A	N/A	N/A
White Pine-Alt	18	19	20	19	19	18	17
Statewide Average	19	18	19	20	20	20	18

School Level Overview of Class Size Ratios

The following sections provide an overview of each school district’s annual class size reduction plan, the justification for variances, as well as the district’s plan of action to reduce class sizes when a variance occurs. Additional school level information such as star rating and student demographic information, including the percent of the school population that is identified as English Learner (EL) and Free and Reduced Lunch (FRL) eligible, is also included. Please note that in the event that an identifier equals 10% or less of the reported values, the data is suppressed to protect student information and is denoted by an asterisk “*”.

Carson City

Carson City School District (CCSD) implemented the alternative class size reduction program for first through fifth grades. In developing their plan, they utilized existing class sizes to project staffing needs in the new school year and hired accordingly to meet the target ratios. Additionally, CCSD hired certified music, P.E., and technology teachers, which reduces the burden on grade level teachers. Special focus was directed to 1- and 2- star schools, specifically Empire Elementary and Fremont Elementary, which were allocated an additional first-grade teacher in order to ensure compliance with the target ratios.

At the start of the school year, CCSD continued to monitor class size ratios every day for the first 10 days of school in order to mitigate significant increases. CCSD will continue to monitor class sizes monthly. When the district developed and submitted their plan, with the exception, of each kindergarten class, only one grade exceeded the target class size ratio, which was a fifth-grade class with a ratio of 26 pupils to 1 licensed teacher. The average estimated kindergarten class size ratio was 22 pupils to 1 licensed teacher, and the maximum kindergarten ratio was 26 pupils to 1 licensed teacher. At that time, CCSD estimated nine grade-level variances.

The Department received variance requests for each kindergarten class with the first-quarter reports. When the variance was requested, CCSD cited that the shift from half-day kindergarten to full day created space constraints for the school, and with no additional classrooms available, it is unable to reduce class sizes further. Additionally, with no new enrollment growth projected, no additional funding is available to hire additional staff. Fritsch Elementary School was the only school to experience more than a kindergarten class size variance.

When providing the justification for variance, CCSD advised that Fritsch Elementary has utilized all available classrooms and currently has accepted 13 students zoned for other elementary schools. No additional zone variances will be approved for the remainder of the school year. Additionally, the school district is in the process of purchasing an additional school site. If the purchase is completed, this will be used to create a new elementary school, which will rezone some students and alleviate class size ratios in each of the six existing elementary schools.

School Name	Star Rating	FRL	ELL	K	1	2	3	4	5
Bordewich Bray Elementary	3	43%	14%	19	17	19	21	18	22
Empire Elementary	3	100%	44%	17	21	20	21	20	21
Fremont Elementary	3	52%	28%	21	22	21	21	21	24
Fritsch Elementary	4	34%	16%	19	18	17	22	22	21
Mark Twain Elementary	4	100%	31%	22	21	21	19	22	23
Seeliger Elementary	5	36%	17%	26	21	19	19	23	26

Churchill

Churchill County School District (Churchill CSD) implemented the alternative class size reduction program for first through fifth grades. In developing their class size reduction plan, Churchill CSD used grade level average daily attendance (ADE) data and the anticipated number of teachers per grade level to predict the district’s class size ratios and anticipated number of variances. The District will increase the number of teachers as funds allow in upcoming years. Reports are provided to the Board of Trustees each month, to assist in monitoring class sizes. At the end of every year, the school district administration looks at projected for enrollment to determine which grade levels may need additional teachers to meet the required ratios.

When the plan was developed, one class size variance was projected for kindergarten and third grade. The kindergarten variance exceeds the target ratio by six students, while the third-grade class exceeded the target by less than one student. When providing justification for the variances, Churchill CSD cited difficulty recruiting qualified teachers to fill open positions and increased enrollment of approximately 40 students. To address potential gaps with larger class sizes,

Churchill CSD will provide an EL specialist and para-educators to support an inclusive and pull-out model.

For the first-quarter reporting period, Churchill CSD requested two variances. One variance in a kindergarten class and one variance in a third-grade class. A kindergarten class was the only class size ratio to exceed the target by more than 1 pupil and was a total of 3 students over the target for kindergarten.

School Name	Star Rating	FRL	ELL	K	1	2	3	4	5
Lahontan Elementary	Not Rated	53%	*	19	18				
E.C. Best Elementary	Not Rated	54%	11%			19	23		
Numa Elementary	Not Rated	51%	12%					24	22

Clark

Clark County School District (Clark CSD) implemented the regular class size reduction program for grades first through third. Within the approved plan, Clark CSD prioritized staffing in the following manner:

Underperforming schools (1- and 2- star schools)

Kindergarten: 21:1 1st Grade: 17:1 2nd Grade: 17:1 3rd Grade 20:1

Remaining schools (3- star and above)

Kindergarten: 21:1 1st Grade: 19:1 2nd Grade: 19:1 3rd Grade 22:1

In developing the staffing allocations, district staff from the budget department and human resources division utilized a formula to distribute CSR units to 1- and 2- star schools. Additionally, the school district will use supplemental funds to reduce the number of 1- and 2- star schools requiring a variance.

Clark CSD initially estimated they would experience 766 grade-level variances. During the first-quarter reporting period, they requested 670 variances. The largest class size was in the second and third grade: 37 pupils to 1 licensed teacher. The largest kindergarten class size ratio was 36 to 1. Clark CSD cited a national teacher shortage as one reason for the variances requested. Clark CSD experienced 813 classroom teacher vacancies, 417 of which were at the elementary school level. Additionally, Clark CSD cited an insufficient number of classrooms to meet the target ratios, advising that additional portable classrooms would need to be purchased.

The district’s plan of action to reduce the requested variances will be to monitor the NSPF star ratings of each school. When a school’s star rating declines, the school will either increase class sizes at the fourth and fifth-grade levels in order to allocate an additional teacher at the designated levels or receive an additional teacher allocation to meet the target ratio. Due to limited funding levels and availability of teachers, 3-, 4-, and 5- star schools whose star rating remains the same or increases will gradually reduce staffing to CSR level averages.

School Name	Star Rating	FRL	ELL	K	1	2	3
Abston, Sandra B ES	#N/A	#N/A	#N/A	24	20	24	20
Adams, Kirk ES	3	64%	32%	19	24	18	23
Adcock, O K ES	2	100%	35%	19	13	16	31
Alamo, Tony ES	4	47%	16%	16	20	22	24
Allen, Dean LaMar ES	3	27%	*	20	18	33	19
Antonello, Lee ES	1	65%	15%	13	16	20	22
Bailey, Sister Robert Joseph ES	2	100%	23%	19	16	17	21
Barber, Shirley A ES	3	#N/A	#N/A	25	25	27	25
Bartlett, Selma F ES	4	29%	*	12	30	28	21
Bass, John C ES	3	51%	11%	20	23	23	23
Batterman, Kathy L ES	5	33%	11%	16	19	25	23
Beatty, John R ES	3	100%	10%	18	18	26	29
Beckley, Will ES	2	100%	46%	21	14	19	18
Bell, Rex ES	2	100%	41%	15	15	19	13
Bendorf, Patricia A ES	3	53%	19%	20	25	20	27
Bennett, William G ES	2	100%	*	17	10	17	59
Berkley, Shelley ES	3	50%	*	26	18	29	25
Bilbray, James ES	5	100%	*	21	18	25	26
Bonner, John W ES	4	22%	12%	18	20	22	24
Booker, Kermit R Sr ES	2	100%	32%	13	17	15	24
Bowler, Grant ES	5	19%	*	16	18	22	23
Bowler, Joseph L ES	2	75%	30%	16	15	16	25
Bozarth, Henry & Evelyn ES	4	17%	*	19	20	21	22
Bracken, Walter ES	3	59%	35%	22	22	21	32
Brookman, Eileen B ES	2	61%	24%	17	15	16	21
Bruner, Lucile ES	2	100%	25%	19	17	19	24
Bryan, Richard H ES	3	48%	11%	14	20	25	29
Bryan, Roger M ES	4	56%	20%	22	21	23	13
Bunker, Berkeley L ES	2	100%	25%	15	18	16	19
Cahlan, Marion ES	3	100%	54%	15	24	22	17
Cambeiro, Arturo ES	3	100%	53%	21	29	41	21
Carl, Kay ES	2	100%	*	21	16	13	19
Carson, Kit ES	2	100%	24%	18	14	19	14
Cartwright, Roberta C ES	4	52%	10%	15	16	47	24
Christensen, M J ES	4	51%	14%	20	26	41	21
Connors, Eileen ES	3	52%	*	18	20	20	15
Cortez, Manuel J ES	3	100%	51%	20	21	15	18
Cox, Clyde C ES	2	100%	39%	22	14	20	22
Cox, David M ES	2	100%	*	24	17	16	21
Cozine, Steve and Linda ES	2	100%	16%	15	20	20	26
Craig, Lois ES	1	100%	40%	30	17	24	22
Crestwood ES	2	81%	55%	18	21	14	18

School Name	Star Rating	FRL	ELL	K	1	2	3
Culley, Paul E ES	2	100%	41%	25	18	15	23
Cunningham, Cynthia ES	2	100%	20%	20	17	16	22
Dailey, Jack ES	3	100%	49%	26	18	20	20
Darnell, Marshall C ES	3	100%	*	23	17	19	19
Dearing, Laura ES	2	100%	35%	22	23	26	22
Decker, C H ES	2	100%	30%	17	12	23	26
Derfelt, Herbert A ES	2	57%	18%	14	18	16	26
Deskin, Ruthe ES	3	100%	18%	18	18	25	24
Detwiler, Ollie ES	2	100%	32%	25	18	17	20
Diaz, Ruben P ES	5	100%	48%	19	21	21	27
Dickens, D L Dusty ES	2	74%	13%	17	18	22	29
Diskin, P A ES	2	100%	36%	27	15	22	21
Divich, Kenneth ES	5	#N/A	#N/A	21	20	20	29
Dondero, Harvey N ES	4	100%	43%	20	20	32	19
Dooley, John ES	3	100%	*	21	26	18	23
Duncan, Ruby ES	1	68%	*	22	27	14	21
Earl, Ira J ES	2	100%	62%	33	19	18	19
Earl, Marion B ES	2	63%	20%	15	17	18	17
Edwards, Elbert ES	2	100%	45%	20	16	15	23
Eisenberg, Dorothy ES	3	100%	12%	14	30	17	17
Elizondo, Raul P ES	1	100%	21%	21	17	16	19
Ellis, Robert & Sandy ES	4	#N/A	#N/A	31	24	21	23
Ferron, William E ES	2	100%	29%	15	13	17	20
Fine, Mark L ES	4	46%	15%	22	32	23	24
Fitzgerald, H P ES	2	100%	31%	16	15	11	16
Fong, Wing and Lilly ES	3	100%	26%	17	21	17	20
Forbuss, Robert L ES	3	40%	*	19	20	34	25
French, Doris ES	3	100%	23%	19	23	22	21
Frias, Charles & Phyllis ES	5	31%	*	26	27	18	19
Galloway, Fay ES	2	44%	*	22	16	15	18
Garehime, Edith ES	3	42%	*	27	17	28	22
Gehring, Roger Acad of Science & Technology ES	5	55%	*	22	22	26	15
Gibson, James ES	4	100%	*	18	18	37	26
Gilbert, CVT ES	2	61%	15%	20	17	18	18
Givens, Linda Rankin ES	5	14%	*	21	19	20	28
Goldfarb, Daniel ES	3	100%	36%	19	18	22	28
Goolsby, Judy & John L ES	5	23%	10%	19	19	21	19
Goynes, Theron H & Naomi D ES	3	39%	*	21	19	21	21
Gragson, Oran K ES	3	100%	46%	13	19	19	22
Gray, R Guild ES	2	100%	30%	16	19	14	16
Griffith, E W ES	2	100%	38%	25	17	20	17
Guy, Addeliar D III ES	3	100%	16%	17	35	19	24

School Name	Star Rating	FRL	ELL	K	1	2	3
Hancock, Doris ES	1	100%	28%	17	21	20	17
Harmon, Harley ES	1	80%	39%	20	23	12	17
Harris, George E ES	2	100%	28%	16	16	31	20
Hayden, Don E ES	3	66%	12%	31	22	19	23
Hayes, Keith C & Karen W ES	2	100%	12%	12	20	16	19
Heard, Lomie G ES	2	100%	33%	20	17	15	20
Heckethorn, Howard E ES	4	29%	*	25	21	27	18
Herr, Helen ES	1	78%	32%	13	19	15	15
Herron, Fay ES	5	100%	57%	17	27	28	23
Hewetson, Halle ES	2	100%	58%	19	15	21	19
Hickey, Liliam Lujan ES	2	100%	31%	18	17	23	28
Hill, Charlotte ES	4	100%	13%	19	18	19	24
Hinman, Edna F ES	2	100%	19%	19	17	19	19
Hoggard, Mabel ES	4	100%	30%	20	22	23	24
Hollingsworth, Howard ES	1	100%	50%	22	18	15	16
Hummel, John R ES	2	100%	13%	13	14	18	23
Indian Springs ES	1	100%	*	11	9	17	13
Iverson, Mervin ES	2	100%	25%	11	13	15	19
Jacobson, Walter ES	2	58%	18%	20	13	17	14
Jeffers, Jay W ES	2	100%	55%	22	15	20	19
Jenkins, Earl N ES	#N/A	#N/A	#N/A	25	23	30	26
Jones Blackhurst, Jan L ES	5	28%	*	19	21	15	21
Jydstrup, Helen ES	4	100%	24%	18	15	19	18
Kahre, Marc ES	2	100%	*	18	11	15	19
Katz, Edythe & Lloyd ES	1	100%	17%	24	19	23	23
Keller, Charlotte & Jerry ES	2	100%	47%	12	26	14	41
Kelly, Matt ES	1	100%	10%	60	18	15	18
Kesterson, Lorna J ES	3	47%	*	20	20	13	22
Kim, Frank ES	2	69%	22%	19	19	16	20
King Jr , Martin Luther ES	2	100%	40%	16	17	18	16
King, Martha P ES	3	100%	*				19
Lake, Robert E ES	3	100%	47%	18	28	17	22
Lamping, Frank ES	4	17%	*	23	24	22	20
Lincoln ES	2	100%	60%	12	16	25	24
Long, Walter V ES	1	100%	44%	16	13	19	19
Lowman, Mary & Zel ES	1	100%	16%	15	16	18	17
Lummis, William ES	4	22%	*	19	24	16	21
Lunt, Robert ES	2	100%	55%	23	14	15	18
Lynch, Ann ES	1	100%	48%	14	16	16	16
Mack, Nate ES	4	47%	*	20	21	23	18
Mackey, Jo ES	4	70%	19%	15	24	23	25
Manch, J E ES	1	100%	20%	15	14	30	20

School Name	Star Rating	FRL	ELL	K	1	2	3
Martinez, Reynaldo L ES	3	100%	39%	13	21	21	26
Mathis, Dr. Beverly S ES	4	52%	15%	25	20	21	20
May, Ernest ES	4	50%	*	22	22	28	32
McCall, Quannah ES	1	100%	51%	23	16	18	17
McCaw, Gordon ES	5	58%	*	32	19	30	25
McDoniel, Estes M ES	5	100%	*	20	21	22	19
McMillan, James B ES	2	100%	21%	20	16	17	16
McWilliams, J T ES	2	100%	48%	22	16	15	29
Mendoza, John F ES	2	77%	44%	19	17	24	19
Miller, Sandy Searles ES	3	70%	34%	30	21	19	24
Mitchell, Andrew ES	Not Rated	100%	*	15	18	18	
Moore, William K ES	1	100%	45%	27	16	28	20
Morrow, Sue H ES	4	42%	*	18	19	26	30
Mountain View ES	2	82%	30%	21	30	30	20
Neal, Joseph M ES	4	100%	*	23	22	13	21
Newton, Ulis ES	4	100%	*	21	21	22	23
NW Career-Technical Academy ES	5	34%	*	22			
O Roarke, Thomas ES	5	26%	*	21	16	21	22
Ober, D'Vorre & Hal ES	4	33%	13%	22	18	21	20
Ortwein, Dennis ES	3	#N/A	#N/A	18	25	25	16
Paradise Prof Dev ES	2	100%	39%	17	18	16	26
Park, John S ES	2	100%	40%	18	16	23	19
Parson, Claude & Stella ES	2	100%	26%	10	16	10	16
Perkins, Dr Claude G ES	1	100%	25%	20	18	14	44
Perkins, Ute ES	2	100%	*	20	25	16	17
Petersen, Dean ES	1	100%	44%	19	17	31	21
Piggott Academy ES	3	31%	11%	27	17	18	24
Pittman, Vail ES	3	100%	37%	24	23	17	31
Priest, Richard C ES	2	100%	20%	26	16	22	23
Red Rock ES	1	100%	34%	13	17	17	22
Reed, Doris M ES	2	100%	29%	33	17	21	20
Reedom, Carolyn S ES	3	32%	*	19	16	16	46
Rhodes, Betsy ES	3	38%	*	22	16	31	24
Ries, Aldeane Comito ES	3	42%	11%	21	25	27	25
Roberts, Aggie ES	2	100%	11%	21	15	17	17
Rogers, Lucille S ES	4	45%	12%	22	19	19	22
Ronnow, C C ES	2	100%	50%	15	16	15	19
Ronzone, Bertha ES	2	100%	38%	22	15	18	24
Roundy, Dr C Owen ES	2	100%	55%	13	14	18	21
Rowe, Lewis E ES	4	100%	32%	15	20	16	19
Rundle, Richard ES	2	100%	39%	16	18	17	19
Sandy Valley ES	3	100%	19%	12	17	8	18

School Name	Star Rating	FRL	ELL	K	1	2	3
Scherkenbach, William & Mary ES	4	100%	*	19	18	23	23
Schorr, Steve ES	3	45%	*	18	24	27	29
Scott, Jesse D ES	1	76%	17%	12	18	17	23
Sewell, C T ES	2	100%	*	14	16	15	19
Simmons, Eva G ES	4	60%	13%	26	18	26	37
Smalley, James E & A Rae ES	5	12%	*	19	17	21	22
Smith, Hal ES	1	100%	24%	16	16	19	18
Smith, Helen M ES	4	100%	17%	12	21	17	24
Snyder, Don & Dee ES	3	42%	*	19	26	29	24
Snyder, William E ES	3	100%	42%	18	19	25	13
Squires, C P ES	2	100%	63%	19	15	24	21
Stanford ES	2	100%	42%	21	15	18	19
Staton, Ethel W ES	4	20%	*	20	22	16	21
Steele, Judith D ES	5	32%	12%	20	20	16	34
Stevens, Josh ES	3	57%	11%	18	18	18	20
Stuckey, Evelyn ES	5	32%	*	20	20	19	23
Sunrise Acres ES	2	100%	53%	23	17	20	15
Tanaka, Wayne N ES	2	50%	*	28	17	13	22
Tarr, Sheila Academy of Int'l Studies ES	4	40%	*	20	20	25	24
Tartan, John ES	1	100%	13%	24	16	16	16
Tate, Myrtle ES	2	100%	43%	17	20	26	16
Taylor, Glen C ES	5	22%	*	17	19	19	23
Taylor, Robert L ES	1	100%	*	16	15	27	18
Thiriot, Joseph E ES	3	100%	32%	22	19	21	31
Thomas, Ruby S ES	1	100%	46%	19	15	15	18
Thompson, Sandra L ES	4	40%	*	15	22	22	19
Thorpe, Jim ES	2	69%	17%	30	20	16	13
Tobler, R E ES	3	100%	19%	18	25	29	18
Tomiyasu, Bill Y ES	2	58%	20%	16	12	25	17
Treem, Harriet ES	4	100%	14%	17	20	21	22
Triggs, Vincent L ES	5	100%	*	19	18	17	20
Twin Lakes ES	2	100%	58%	25	17	16	17
Twitchell, Neil C ES	4	20%	*	21	18	19	22
Ullom, J M ES	2	100%	36%	32	23	21	24
Vanderburg, John ES	4	10%	*	15	23	20	20
Vassiliadis, Billy & Rosemary ES	5	*	*	19	19	20	21
Vegas Verdes ES	3	100%	42%	23	18	15	25
Virgin Valley ES	4	62%	22%	22	15	22	22
Walker, J Marlan Int'l School ES	3	26%	*	21	19	35	25
Wallin, Shirley & Bill ES	5	10%	*	24	13	25	23
Ward, Gene ES	1	100%	41%	47	16	16	21
Ward, Kitty McDonough ES	4	33%	*	23	19	21	22

School Name	Star Rating	FRL	ELL	K	1	2	3
Warren, Rose ES	3	100%	50%	17	20	16	20
Wasden, Howard ES	3	100%	23%	18	15	18	21
Watson, Fredric W ES	2	71%	18%	17	16	16	26
Wengert, Cyril ES	3	100%	43%	25	20	26	20
West Prep ES	2	86%	53%	28	18	17	15
Whitney ES	1	100%	23%	15	19	20	17
Wiener, Jr , Louis ES	4	100%	13%	20	25	17	22
Wilhelm, Elizabeth ES	1	100%	18%	11	18	14	17
Williams, Tom ES	2	100%	61%	21	16	18	20
Williams, Wendell ES	1	100%	17%	24	12	18	13
Wolfe, Eva ES	2	100%	17%	22	17	18	22
Wolff, Elise L ES	5	15%	*	26	17	21	25
Woolley, Gwendolyn ES	2	100%	38%	16	15	21	29
Wright, William V ES	3	34%	*	24	18	23	15
Wynn, Elaine ES	2	100%	53%	28	14	17	22
NV Learning Academy ES	3	#N/A	#N/A				9
Thompson, Tyrone ES	#N/A	#N/A	#N/A	14	16	21	17

Douglas

Douglas County School District (DCSD) implemented the alternative program for first through sixth grades for the 2020-2021 school year. DCSD also chose to prioritize its lowest-performing schools first when addressing class size ratios, as well as assign additional teachers to multi-grade classrooms. The district will monitor class sizes quarterly. But because enrollment is not expected to increase, staffing allocations will be reviewed in August and adjusted as needed.

During the first-quarter reporting period, DCSD reported that two of the variances requested were the result of vacancies that are currently filled with long-term substitutes in kindergarten and second grade at C.C. Meneley Elementary School. If the vacancies were filled with a licensed teacher, the ratios would reduce from 34:1 to 25:1 and 27:1 to 21:1 respectively. The largest class size ratio was in a sixth-grade class, 29 pupils per licensed teacher. The school district has identified Minden Elementary School as the overflow school when kindergarten classes exceed a 25 to 1 ratio. As new kindergarten students are enrolled, they are assigned to attend Minden Elementary.

Additionally, the school district indicated that with the shift in reporting from the district level to the school level, and without an equivalent shift in funding, it has disproportionately increased the focus to the individual school level. If the district hired sufficient staff to eliminate every variance, it would not be a fiscally neutral solution. Hiring an additional teacher to reduce a class of 24 students to two classes of 12 would over-correct the variance and would create a financial burden on the district.

School Name	Star Rating	FRL	ELL	K	1	2	3	4	5	6
C.C. Meneley Elementary	4	51%	*	18	15	21	19	19	15	
Gardnerville Elementary	4	35%	12%	18	15	15	18	19	19	
Jacks Valley Elementary	3	45%	14%	23	16	13	19	16	20	
Gene Scarselli Elementary	4	34%	*	24	21	16	19	17	19	
Pinon Hills Elementary	4	19%	*	16	22	20	18	20	18	
Minden Elementary	4	29%	*	17	17	16	16	16	20	
Zephyr Cove Elementary	3	38%	14%	25	18	14	18	30	17	29

Elko

For the 2020-2021 school year, Elko County School District (ECSD) chose to implement the alternative class size reduction program in first through sixth grades. The district attempted to shift staffing allocations and funding to meet the updated kindergarten class size ratio requirement of 16 pupils to 1 licensed teacher. However, due to teacher shortages, target ratios could not be achieved at each school. ECSD currently utilizes nine long-term substitute teachers in K-6 core elementary classes and two permanent positions.

The school district will continue to monitor kindergarten enrollment and efforts will be made again in FY21 to increase staffing allocations to comply with the target ratios.

Within the first-quarter reporting period, ECSD's largest class size was in a fifth and sixth grade class at 28:1, each. The district is meeting the target ratios in most grades for the first quarter.

The district attempted to recruit sufficient staff to meet the ratios in all grades; however, the current teacher shortage hindered these efforts. The school district is utilizing long-term substitutes to fill vacancies, which are not reflected in the ratio calculation.

School Name	Star Rating	FRL	ELL	K	1	2	3	4	5	6
Carlin Elementary	2	47%	*	25	12	18	18	16	21	22
Elko Grammar #2	2	42%	*	15	21	15	21	21		
Flagview Intermediate	2	43%	16%						28	28
Jackpot Elementary	2	79%	32%	21	21	16	16	15	15	13
Liberty Peak Elementary	#N/A	#N/A	#N/A	21	21	17	22	22	23	
Mountain View Elementary	5	21%	11%	18	20	20	19	27		
Northside Elementary	3	44%	16%	14	21	19	17	19		
Owyhee Elementary	1	100%	*	4	13	14	14	17	19	18
Sage Elementary	1	35%	*	16	19	21	18	24	22	
Southside Elementary	4	63%	26%	14	20	19	22	22		
Spring Creek Elementary	3	16%	*	23	16	21	17	21	19	
Wells Elementary	3	49%	17%	15	22	18	17	27	25	22
West Wendover Elementary	2	78%	32%	21	20	20	17	21	24	24

Esmeralda

Esmeralda County School District (Esmeralda CSD) does not qualify to receive class size reduction funding, because their base ratios are less than the established target ratios. As a result, they are excluded from the requirement to submit a class size reduction plan. However, the quarterly reporting requirement is still observed. For the first quarter reporting period, Esmeralda CSD’s largest class size ratio was 14 pupils per teacher and was reported in a kindergarten class at Dyer Elementary. The district has no additional reporting requirements at this time.

School Name	Star Rating	FRL	ELL	K	1	2	3	4	5	6
Dyer Elementary	1	52%	30%	14		14	8	8	12	12
Goldfield Elementary	Not Rated	62%	*	12	12	12		11	11	11
Silver Peak Elementary	Not Rated	*	*	4	4		4		4	

Eureka

Eureka County School District (Eureka CSD) chose to implement the alternative class size reduction program for first through sixth grades. For the first quarter reporting period, the district has requested one variance in a kindergarten class with the ratio being 25 pupils to one licensed teacher at Eureka Elementary. This was also Eureka CSD’s largest class.

School Name	Star Rating	FRL	ELL	K	1	2	3	4	5	6
Crescent Valley Elementary	2	41%	*	13	10	10	4	7	10	8
Eureka Elementary	3	22%	*	25	11	13	15	17	16	21

Humboldt

Humboldt County School District (HCSD) chose to implement the alternative class size reduction program for grades first through sixth. In developing their plan, they estimated they would experience ten variances at the school level. Due to the high variability Humboldt experiences in enrollment, the district did not feel that hiring the additional required staff would be fiscally responsible.

The district will monitor enrollment patterns and will adjust staffing, if possible, to further reduce the number of grade levels identified as out of compliance. HCSD will implement contract language to shift positions and address class sizes that may be higher than anticipated. This will be tracked on a quarterly basis and addressed as defined in the collective bargaining agreement to rectify, as possible.

In HCSD’s first-quarter report, their largest reported class size ratio was in fifth grade and was 26 pupils to 1 licensed teacher. This was the result of a vacancy the district was unable to fill and is being addressed by a long-term substitute. The largest kindergarten class size was 23:1 licensed teacher.

Student transiency is an ongoing challenge for the district and staffing allocations are based on projected enrollment. The district’s education association contract precludes hiring new staff

mid-year, which contributes to minor grade-level deviations. The district will continue to monitor class sizes. Should a grade level deviate too much, the district can utilize a long-term substitute.

School Name	Star Rating	FRL	ELL	K	1	2	3	4	5	6
Denio Elementary School	Not Rated	*	*			2	2	6		6
French Ford Middle School	2	#N/A	#N/A						26	23
Grass Valley Elementary School	3	48%	*	17	23	17	18	18		
Kings River Elementary School	Not Rated	*	*	6		6	6		6	
McDermitt Combined School	1	99%	*	7	6	8	18	18	21	21
Orovada Elementary School	2	63%	31%	23	20	24	21	24	3	5
Paradise Valley Elementary School	2	56%	*	17	17	17	11	17	6	
Sonoma Heights Elementary School	3	51%	16%	17	19	20	17	22		
Winnemucca Grammar School	4	59%	21%	21	20	18	20	20		

Lander

For the 2020-2021 school year, Lander County School District (LCSD) chose to implement the alternative class size reduction program in first through fifth grades. The district projected one class size variance would be requested for kindergarten.

For the first quarter reporting period, one variance was requested for kindergarten at Battle Mountain Elementary, and the largest class size was 21 to 1 in a fourth-grade class at Battle Mountain Elementary School. The district cited lack of classrooms and insufficient funds to provide incentives to hire additional teachers as the justification for the variance. The district noted that since they are close to meeting the class size reduction requirements, it would not be fiscally neutral to hire additional staff to reduce the ratios further. As a result, the district will continue to monitor enrollment and will adjust as needed.

School Name	Star Rating	FRL	ELL	K	1	2	3	4	6
Austin K-12	Not Rated	*	*		6	6	6		6
Battle Mountain Elementary	2	34%	10%	20	19	16	18	21	

Lincoln

Lincoln County School District (Lincoln CSD) chose to implement the regular class size reduction program for first through third grades. The district estimated that eight grade-level class size variances would be needed; however, as the district met all of the target ratios at the district-level with the available funding, the district provided additional assistance to those that exceed the target ratios at the school level.

Lincoln CSD requested six class size variances in the first-quarter report. The largest class size was 22 pupils to 1 licensed teacher in a first grade class, followed by a ratio of 21 pupils to 1 licensed teacher in third grade. Panaca Elementary had 20 pupils to 1 licensed teacher for kindergarten. The justification for the variance was an increase in student enrollment, classroom space limitation, difficulty hiring due to rural location, and limited funding. The district provides para-professionals to assist during instructional times in classes that exceed the target ratio.

School Name	Star Rating	FRL	ELL	K	1	2	3
Caliente Elementary	4	64%	*	8	10	18	18
Panaca Elementary	3	46%	*	20	20	16	16
Pioche Elementary	4	51%	*	13	10	6	6
Pahrnagat Valley Elementary	3	42%	*	16	22	18	21

Lyon

For the 2020-2021 school year, Lyon County School District (Lyon CSD) chose to implement the alternative class size reduction program in first through sixth grades. The district estimated they would request 20 grade-level variances which are the result of facility limitations, difficulty hiring in a rural location, and remaining fiscally neutral in instances where the target ratio is exceeded by only a few students. Lyon CSD reviews average daily attendance on a quarterly basis and analyzes the ratios to determine if allocations should be modified, moved to different grade levels, or added to school allocations. Based on the trends in student attendance, the District considers the time of year, location of schools, NSPF rating, and the ability to hire teachers.

In the first-quarter report, the district requested 24 variances. The largest kindergarten class size was 19 pupils to 1 licensed teacher; seven of the requested variances were attributed to the kindergarten grade-level. The largest class size was 32 pupils to 1 licensed teacher in a fourth-grade class. The district noted that enrollment figures have remained relatively stable and anticipate hiring additional teachers as enrollment increases.

School Name	Star Rating	FRL	ELL	K	1	2	3	4	5	6
Cottonwood Elementary	2	65%	*	18	24	20	20	27		
Dayton Elementary	3	60%	11%	15	15	17	24	32	22	30
East Valley Elementary	3	56%	*	19	23	22	22	24		
Fernley Elementary	2	71%	*	19	14	19	24	21		
Fernley Intermediate	3	#N/A	#N/A						22	21
Riverview Elementary	3	52%	*	18	14	19	17	30	26	29
Silver Stage Elementary	2	100%	*	19	17	19	19	20		
Silver Stage Middle	3	#N/A	#N/A						23	27
Smith Valley	2	31%	*	13	17	10	11	15	17	11
Sutro Elementary	2	63%	*	18	15	13	20	31	29	28
Yerington Elementary	1	73%	17%	17	18	15	31	30		
Yerington Intermediate	2	65%	*						26	23

Mineral

Mineral County School District (MCSD) chose to implement the alternative program for first through sixth grades in the 2020-2021 school year. The district estimated that they would request one grade-level variance. However, the district was able to use the provided funding to meet the target ratios at the district level as required. Thus, additional action to reduce individual class sizes further to eliminate variances would not be fiscally neutral.

In the first-quarter report, the district requested one grade-level variance. The largest class size was 26 pupils to 1 licensed teacher in the second grade, followed by 20 pupils to 1 licensed teacher ratio in third grade. The largest kindergarten class size was 17 pupils to 1 licensed teacher. MCSD cited difficulty hiring due to being in a very rural location as the reason for the variance. The district will continue to monitor the transient populations and hire new teachers as needed.

School Name	Star Rating	FRL	ELL	K	1	2	3	4	5	6
Hawthorne Elementary	4	51%	*	17	19	16	20	19	20	16
Schurz Elementary	1	100%	66%	15	14	26	20	18	19	6

Nye

Nye County School District (NCSD) implemented the alternative class size reduction program for grades first through fifth. The district estimated they would request 23 grade-level class size variances, 8 of which would be in kindergarten classes. The district’s plan to reduce classes is to focus on meeting target ratios at the district level first. Secondly, the district will monitor first through third grades in Pahrump and allocate additional teachers as funding permits. Fourth and fifth grades and remote rural areas will be the third and fourth priorities, and kindergarten will be the last priority.

NCSD allocated positions to meet the district goal, except for kindergarten which will take more time to secure the resources (classroom space and additional full-time teaching positions), needed to meet the target. NCSD purposely allocated teachers and created combination classes, so the district would have room to grow with their district ratios.

NCSD utilizes their Average Daily Attendance (ADA) reports and an estimate of ADE will be made every month. The CSR report will be updated every school month with ADA numbers to anticipate variances. Any ratios that exceed the base or target ratios will be accompanied by increases in ADE, which will support additional teacher allocations. These will then be presented to their monthly Board of Trustee meetings for approval.

NCSD requested 23 grade-level variances in the first quarter. The largest class size ratio was 32 pupils to 1 licensed teacher in a fifth-grade class. The largest kindergarten class size ratio was 22 pupils to 1 licensed teacher. The district cited difficulty hiring due to remote locations as an obstacle.

School Name	Star Rating	FRL	ELL	K	1	2	3	4	5
Amargosa Valley Elementary School	1	100%	41%	18	24	24	13	11	17
Beatty Elementary School	4	100%	21%	21	21	21	21	18	18
Duckwater Elementary School	5	*	*	9	9	9	0	9	0
Floyd Elementary School	2	100%	*	22	25	25	28	21	32
Gabbs Elementary School	1	100%	*	22	22	23	23	22	23
Hafen Elementary School	3	100%	*	21	21	22	24	23	23
JG Johnson Elementary School	2	100%	*	17	20	22	20	26	20
Manse Elementary School	3	100%	10%	20	18	21	20	23	27
Round Mountain Elementary School	1	14%	*	14	23	10	18	22	25
Tonopah Elementary School	2	40%	*	11	12	24	14	26	25
Warm Springs Elementary School	Not Rated	*	*	0	11	11	11	11	0

Pershing

Pershing County School District (PCSD) applied for the regular class size reduction program for grades one through three. The district estimated they would request two grade-level variances and advised that due to funding limitations, no additional staffing would be hired beyond the allocations provided under the CSR grant. In the event enrollment increases, para-professionals will be used to support students in core subject areas.

PCSD requested 5 grade-level variances in their first-quarter report and cited funding limitations due to declining enrollment. The district's largest class size is found in a one classroom school, which has one teacher for a total of 22 students across kindergarten through fifth grades. As noted previously, a lack of funding prevents the district from reducing class size further.

School Name	Star Rating	FRL	ELL	K	1	2	3	4	5
Lovelock Elementary School	2	55%	*	17	17	20	19	18	22
Imlay Elementary School	Not Rated	100%	*	21	22	14	22	20	21

Storey

For the 2020-2021 school year, Storey County School District (SCSD) chose to implement the alternative class size program for grades first through fifth. The district estimated they would request two class size variances in second and fifth grades. The district will use the available funds to extend the time of a certified teacher by 40% and hire a classroom aide to assist students in overcrowded classrooms.

SCSD requested 4 class size variances, with the largest variance being 25 pupils to 1 licensed teacher in a fourth-grade class. The second largest class size is found in third and fifth grade classes at 24 students to 1 licensed teacher. The district will continue to monitor class sizes and provide additional support to teachers as needed.

School Name	Star Rating	FRL	ELL	K	1	2	3	4	5
Hillside Elementary	4	45%	*	8	19	19	24	25	24
Hugh Gallagher Elementary	3	35%	*	21	19	22	22	19	24

Washoe

Washoe County School District (WCSD) implemented the regular class size reduction program for grades first through third. In order to achieve the target ratios, WCSD utilizes enrollment projections developed by schools and applies the target staffing ratios at all 1- star schools to ensure ratios do not exceed the funded targets. This also serves to ensure ratios meet the target at the district-level. Additionally, the district has built new schools and rezoned most sixth-grade classes from elementary to middle schools in an effort to relieve overcrowding.

WCSD notes that in some instances a lack of physical capacity to reduce class sizes further still exists. In these instances, team teaching will be employed. However, the district acknowledges this is not ideal. Additionally, WCSD strives to employ as many highly effective teachers as possible, believing this is the single most important factor in student success. The district estimated they would need to request 134 class size variances for the 2020-2021 school year and plans to actively monitor student enrollment throughout the year. If significant enrollment growth occurs, additional staffing will be allocated to ensure adherence to the target ratios.

In their first-quarter report for the 2020-2021 school year, WCSD requested 132 grade-level variances. The largest class size ratio was in a first grade class and had 25 pupils to 1 licensed teacher. The largest class size for kindergarten was 24 pupils to 1 teacher. As previously noted, the WCSD has built two new middle schools and one new elementary school, which will provide rezoning of overcrowded schools. WCSD noted that updated NSPF ratings identified a higher number of 2-star schools this year, which has impacted the district's ability to focus on funding as efficiently on underperforming schools. The district will review and revise staffing allocations during the FY21 budgeting process. WCSD advised that they are experiencing a structural deficit as costs exceed revenues and the district is projecting flat enrollment growth; therefore, few changes in variance requests are anticipated.

School Name	Star Rating	FRL	ELL	K	1	2	3
Alice Smith Elementary	2	60%	23%	17	17	20	19
Allen Elementary	2	100%	38%	21	18	16	20
Anderson Elementary	1	100%	43%	17	16	15	20
Beasley Elementary	3	20%	*	20	16	16	20
Beck Elementary	5	24%	11%	21	19	19	20
Bennett Elementary	2	70%	30%	18	19	15	20
Bohach Elementary	#N/A	#N/A	#N/A	21	25	23	20
Booth Elementary	1	100%	33%	18	17	19	19
Brown Elementary	5	10%	*	15	18	18	23
Cannan Elementary	2	100%	39%	15	16	19	23
Caughlin Ranch Elementary	5	*	*	19	20	20	18

School Name	Star Rating	FRL	ELL	K	1	2	3
Corbett Elementary	4	100%	57%	16	17	17	22
Desert Heights Elementary	2	100%	24%	17	17	15	19
Diedrichsen Elementary	4	39%	*	24	15	17	18
Dodson Elementary	3	61%	28%	14	17	19	15
Donner Springs Elementary	4	53%	21%	18	16	14	17
Double Diamond Elementary	3	22%	10%	21	15	16	18
Drake Elementary	4	67%	28%	15	12	18	12
Duncan Elementary	2	100%	51%	14	16	20	24
Dunn Elementary	2	53%	22%	17	15	18	18
Elmcrest Elementary	2	63%	18%	15	14	18	18
Gomes Elementary	2	39%	*	20	17	18	19
Gomm Elementary	5	*	*	24	14	16	18
Greenbrae Elementary	2	100%	45%	18	15	20	18
Hall Elementary	3	27%	*	22	15	14	19
Hidden Valley Elementary	3	46%	12%	18	23	16	18
Huffaker Elementary	4	25%	*	13	15	16	16
Hunsberger Elementary	5	*	*	16	19	17	18
Hunter Lake Elementary	5	42%	*	17	16	16	18
Incline Elementary	3	32%	38%	20	20	19	17
Juniper Elementary	3	45%	18%	14	15	15	22
Kate Smith Elementary	2	100%	55%	17	16	19	21
Lemelson Elementary	3	100%	38%	16	16	14	18
Lemmon Valley Elementary	2	54%	26%	21	17	18	20
Lenz Elementary	4	*	*	23	16	16	22
Lincoln Park Elementary	2	100%	38%	16	19	17	18
Loder Elementary	2	100%	60%	19	16	18	15
Mathews Elementary	2	100%	49%	17	15	15	18
Maxwell Elementary	4	100%	32%	19	18	24	17
Melton Elementary	5	*	*	18	17	20	19
Mitchell Elementary	2	100%	38%	18	14	19	18
Moss Elementary	3	37%	16%	23	18	17	18
Mount Rose Elementary	5	37%	*	17	16	16	25
Natchez Elementary	1	100%	*	12	11	14	11
Palmer Elementary	3	67%	33%	23	17	14	20
Peavine Elementary	3	43%	12%	19	18	19	22
Pleasant Valley Elementary	4	#N/A	#N/A	16	18	17	20
Poulakidas Elementary	#N/A	#N/A	#N/A	23	19	17	21
Risley Elementary	2	100%	48%	15	18	20	18
Sepulveda Elementary	3	25%	12%	14	17	17	24
Silver Lake Elementary	4	43%	19%	18	18	15	21
Smithridge Elementary	2	100%	51%	22	17	18	19
Spanish Springs Elementary	4	12%	*	19	13	14	17

School Name	Star Rating	FRL	ELL	K	1	2	3
Stead Elementary	2	65%	27%	20	18	18	21
Sun Valley Elementary	2	100%	52%	18	16	16	21
Taylor Elementary	5	18%	*	14	16	17	17
Towles Elementary	4	43%	*	24	17	20	22
Van Gorder Elementary	5	*	*	20	17	15	17
Verdi Elementary	3	16%	*	16	15	19	23
Veterans Elementary	1	100%	43%	11	15	15	16
Warner Elementary	3	65%	17%	19	18	19	23
Westergard Elementary	3	16%	*	17	18	16	25
Whitehead Elementary	4	26%	*	15	19	16	19
Winnemucca Elementary	4	35%	10%	17	17	13	20

White Pine

For the 2020-2021 school year, White Pine County School District (WPCSD) chose to implement the alternative plan for grades first through sixth. The district estimated they would request four variances for the kindergarten grade level. The district noted that with the available funding provided under the CSR grant, WPCSD can meet all the target ratios at the district-level, with the exception of kindergarten. The district currently has an Alternative Route to Licensure (ARL) teacher on staff to support the kindergarten class; this teacher is not included in the class size ratio calculation, so the ratio is reported as a variance. Additionally, the district cited lack of revenue makes it difficult to add an additional kindergarten class and that the district has support staff in classrooms with ratios above the target.

WPCSD requested 3 grade-level variances for the first quarter. The highest ratio was 24 pupils to one licensed teacher in a third-grade class at McGill Elementary. The highest ratio for kindergarten was 20 pupils to one licensed teacher at Lund Elementary.

School Name	Star Rating	FRL	ELL	K	1	2	3	4	5	6
Baker Elementary	4	*	*				17	17	17	17
D.E. Norman Elementary	1	47%	*	17	16	22	19	18	19	
Lund Elementary	1	*	*	20	20	18	18	17	17	
McGill Elementary	2	48%	*	16	20	21	24	23	21	

Variance Justifications

Below is a table identifying the overarching variance justifications for each variance requested.

Plan	District	School Name	Facility Limitation	Difficulty Hiring	Funding Limitation	Other
Alt.	Carson	Bordewich Bray Elementary	X	X		
Alt.	Carson	Empire Elementary		X		
Alt.	Carson	Fremont Elementary		X		
Alt.	Carson	Fritsch Elementary		X		
Alt.	Carson	Mark Twain Elementary	X	X		
Alt.	Carson	Seeliger Elementary	X	X		
Alt.	Churchill	Lahontan Elementary School		X	X	
Alt.	Churchill	Numa Elementary School				
Alt.	Churchill	E.C. Best Elementary School				
Alt.	Douglas	C.C. Meneley Elementary			X	
Alt.	Douglas	Gardnerville Elementary			X	
Alt.	Douglas	Gene Scarselli Elementary			X	
Alt.	Douglas	Jacks Valley Elementary			X	
Alt.	Douglas	Minden Elementary				
Alt.	Douglas	Zephyr Cove Elementary			X	
Alt.	Douglas	Pinon Hills Elementary				
Alt.	Douglas	Douglas Nevada Online			X	
Alt.	Elko	Carlin Elementary		X	X	
Alt.	Elko	Elko Grammar #2				
Alt.	Elko	Flagview Intermediate		X	X	
Alt.	Elko	Jackpot Elementary		X	X	
Alt.	Elko	Liberty Peak Elementary		X	X	
Alt.	Elko	Mountain View Elementary		X	X	
Alt.	Elko	Northside Elementary				
Alt.	Elko	Owyhee Elementary				
Alt.	Elko	Sage Elementary				
Alt.	Elko	Southside Elementary				
Alt.	Elko	Spring Creek Elementary		X	X	
Alt.	Elko	Wells Elementary		X	X	
Alt.	Elko	West Wendover Elementary		X	X	
Alt.	Esmeralda	Dyer Elementary				
Alt.	Esmeralda	Goldfield Elementary				
Alt.	Esmeralda	Silver Peak Elementary				
Alt.	Eureka	Crescent Valley Elementary				
Alt.	Eureka	Eureka Elementary				
Alt.	Humboldt	Denio Elementary School				

Plan	District	School Name	Facility Limitation	Difficulty Hiring	Funding Limitation	Other
Alt.	Humboldt	French Ford Middle School			X	
Alt.	Humboldt	Grass Valley Elementary School			X	
Alt.	Humboldt	Kings River Elementary School				
Alt.	Humboldt	McDermitt Combined School				
Alt.	Humboldt	Orovada Elementary School			X	
Alt.	Humboldt	Paradise Valley Elementary School			X	
Alt.	Humboldt	Sonoma Heights Elementary School			X	
Alt.	Humboldt	Winnemucca Grammar School			X	
Alt.	Lander	Battle Mountain Elementary School	X	X	X	
Alt.	Lander	Austin K-12				
Alt.	Lyon	Cottonwood Elementary	X	X	X	
Alt.	Lyon	Dayton Elementary	X	X	X	
Alt.	Lyon	East Valley Elementary	X	X	X	
Alt.	Lyon	Fernley Elementary	X	X	X	
Alt.	Lyon	Fernley Intermediate				
Alt.	Lyon	Riverview Elementary	X	X	X	
Alt.	Lyon	Silver Stage Elementary	X	X	X	
Alt.	Lyon	Silver Stage Middle	X	X	X	
Alt.	Lyon	Smith Valley				
Alt.	Lyon	Sutro Elementary	X	X	X	
Alt.	Lyon	Yerington Elementary	X	X	X	
Alt.	Lyon	Yerington Intermediate	X	X	X	
Alt.	Mineral	Hawthorne Elementary				
Alt.	Mineral	Schurz Elementary		X	X	
Alt.	Nye	Amargosa Valley Elementary School		X	X	
Alt.	Nye	Beatty Elementary School		X	X	
Alt.	Nye	Duckwater Elementary School				
Alt.	Nye	Floyd Elementary School	X	X	X	
Alt.	Nye	Gabbs Elementary School		X	X	
Alt.	Nye	Hafen Elementary School		X	X	
Alt.	Nye	JG Johnson Elementary School	X	X	X	
Alt.	Nye	Manse Elementary School		X	X	
Alt.	Nye	Round Mountain Elementary School		X	X	
Alt.	Nye	Tonopah Elementary School		X	X	
Alt.	Nye	Warm Springs Elementary School				
Alt.	Storey	Hillside Elementary				
Alt.	Storey	Hugh Gallagher Elementary			X	
Alt.	White Pine	Baker Elementary				
Alt.	White Pine	D.E. Norman Elementary		X		
Alt.	White Pine	Lund Elementary		X		

Plan	District	School Name	Facility Limitation	Difficulty Hiring	Funding Limitation	Other
Alt.	White Pine	McGill Elementary	X			
Regular	Clark	Adams, Kirk ES	X	X	X	
Regular	Clark	Adcock, O K ES	X	X	X	
Regular	Clark	Alamo, Tony ES	X	X	X	
Regular	Clark	Allen, Dean LaMar ES	X	X	X	
Regular	Clark	Antonello, Lee ES	X	X	X	
Regular	Clark	Bailey, Sister Robert Joseph ES				
Regular	Clark	Barber, Shirley A ES	X	X	X	
Regular	Clark	Bartlett, Selma F ES	X	X	X	
Regular	Clark	Bass, John C ES	X	X	X	
Regular	Clark	Batterman, Kathy L ES	X	X	X	
Regular	Clark	Beatty, John R ES	X	X	X	
Regular	Clark	Beckley, Will ES	X	X	X	
Regular	Clark	Bell, Rex ES	X	X	X	
Regular	Clark	Bendorf, Patricia A ES	X	X	X	
Regular	Clark	Bennett, William G ES	X	X	X	
Regular	Clark	Berkley, Shelley ES	X	X	X	
Regular	Clark	Bilbray, James ES	X	X	X	
Regular	Clark	Bonner, John W ES	X	X	X	
Regular	Clark	Booker, Kermit R Sr ES	X	X	X	
Regular	Clark	Bowler, Grant ES	X	X	X	
Regular	Clark	Bowler, Joseph L ES	X	X	X	
Regular	Clark	Bozarth, Henry & Evelyn ES	X	X	X	
Regular	Clark	Abston, Sandra B ES	X	X	X	
Regular	Clark	Bracken, Walter ES	X	X	X	
Regular	Clark	Brookman, Eileen B ES	X	X	X	
Regular	Clark	Bruner, Lucile ES	X	X	X	
Regular	Clark	Bryan, Richard H ES	X	X	X	
Regular	Clark	Bryan, Roger M ES	X	X	X	
Regular	Clark	Bunker, Berkeley L ES	X	X	X	
Regular	Clark	Cahlan, Marion ES	X	X	X	
Regular	Clark	Cambeiro, Arturo ES	X	X	X	
Regular	Clark	Carl, Kay ES				
Regular	Clark	Carson, Kit ES	X	X	X	
Regular	Clark	Cartwright, Roberta C ES	X	X	X	
Regular	Clark	Christensen, M J ES	X	X	X	
Regular	Clark	Connors, Eileen ES	X	X	X	
Regular	Clark	Cortez, Manuel J ES	X	X	X	
Regular	Clark	Cox, Clyde C ES	X	X	X	
Regular	Clark	Cox, David M ES				

Plan	District	School Name	Facility Limitation	Difficulty Hiring	Funding Limitation	Other
Regular	Clark	Cozine, Steve and Linda ES	X	X	X	
Regular	Clark	Craig, Lois ES	X	X	X	
Regular	Clark	Crestwood ES	X	X	X	
Regular	Clark	Culley, Paul E ES	X	X	X	
Regular	Clark	Cunningham, Cynthia ES	X	X	X	
Regular	Clark	Dailey, Jack ES	X	X	X	
Regular	Clark	Darnell, Marshall C ES	X	X	X	
Regular	Clark	Dearing, Laura ES	X	X	X	
Regular	Clark	Decker, C H ES	X	X	X	
Regular	Clark	Derfelt, Herbert A ES	X	X	X	
Regular	Clark	Deskin, Ruthe ES	X	X	X	
Regular	Clark	Detwiler, Ollie ES				
Regular	Clark	Diaz, Ruben P ES	X	X	X	
Regular	Clark	Dickens, D L Dusty ES	X	X	X	
Regular	Clark	Diskin, P A ES	X	X	X	
Regular	Clark	Divich, Kenneth ES	X	X	X	
Regular	Clark	Dondero, Harvey N ES	X	X	X	
Regular	Clark	Dooley, John ES	X	X	X	
Regular	Clark	Duncan, Ruby ES	X	X	X	
Regular	Clark	Earl, Ira J ES	X	X	X	
Regular	Clark	Earl, Marion B ES				
Regular	Clark	Edwards, Elbert ES	X	X	X	
Regular	Clark	Eisenberg, Dorothy ES	X	X	X	
Regular	Clark	Elizondo, Raul P ES				
Regular	Clark	Ellis, Robert & Sandy ES	X	X	X	
Regular	Clark	Ferron, William E ES				
Regular	Clark	Fine, Mark L ES	X	X	X	
Regular	Clark	Fitzgerald, H P ES				
Regular	Clark	Fong, Wing and Lilly ES	X	X	X	
Regular	Clark	Forbuss, Robert L ES	X	X	X	
Regular	Clark	French, Doris ES	X	X	X	
Regular	Clark	Frias, Charles & Phyllis ES	X	X	X	
Regular	Clark	Galloway, Fay ES				
Regular	Clark	Garehime, Edith ES	X	X	X	
Regular	Clark	Gehring, Roger D Acad of Science & Technology ES	X	X	X	
Regular	Clark	Gibson, James ES	X	X	X	
Regular	Clark	Gilbert, CVT ES				
Regular	Clark	Givens, Linda Rankin ES	X	X	X	
Regular	Clark	Goldfarb, Daniel ES	X	X	X	

Plan	District	School Name	Facility Limitation	Difficulty Hiring	Funding Limitation	Other
Regular	Clark	Goolsby, Judy & John L ES	X	X	X	
Regular	Clark	Goynes, Theron H & Naomi D ES	X	X	X	
Regular	Clark	Gragson, Oran K ES	X	X	X	
Regular	Clark	Gray, R Guild ES	X	X	X	
Regular	Clark	Griffith, E W ES	X	X	X	
Regular	Clark	Guy, Addeliar D III ES	X	X	X	
Regular	Clark	Hancock, Doris ES	X	X	X	
Regular	Clark	Harmon, Harley ES	X	X	X	
Regular	Clark	Harris, George E ES	X	X	X	
Regular	Clark	Hayden, Don E ES	X	X	X	
Regular	Clark	Hayes, Keith C & Karen W ES	X	X	X	
Regular	Clark	Heard, Lomie G ES				
Regular	Clark	Heckethorn, Howard E ES	X	X	X	
Regular	Clark	Herr, Helen ES	X	X	X	
Regular	Clark	Herron, Fay ES	X	X	X	
Regular	Clark	Hewetson, Halle ES	X	X	X	
Regular	Clark	Hickey, Liliam Lujan ES	X	X	X	
Regular	Clark	Hill, Charlotte ES	X	X	X	
Regular	Clark	Hinman, Edna F ES	X	X	X	
Regular	Clark	Hoggard, Mabel ES	X	X	X	
Regular	Clark	Hollingsworth, Howard ES				
Regular	Clark	Hummel, John R ES	X	X	X	
Regular	Clark	Indian Springs ES				
Regular	Clark	Iverson, Mervin ES				
Regular	Clark	Jacobson, Walter ES				
Regular	Clark	Jeffers, Jay W ES	X	X	X	
Regular	Clark	Jenkins, Earl N ES	X	X	X	
Regular	Clark	Jones Blackhurst, Jan L ES	X	X	X	
Regular	Clark	Jydstrup, Helen ES	X	X	X	
Regular	Clark	Kahre, Marc ES				
Regular	Clark	Katz, Edythe & Lloyd ES	X	X	X	
Regular	Clark	Keller, Charlotte & Jerry ES	X	X	X	
Regular	Clark	Kelly, Matt ES				
Regular	Clark	Kesterson, Lorna J ES	X	X	X	
Regular	Clark	Kim, Frank ES	X	X	X	
Regular	Clark	King Jr , Martin Luther ES	X	X	X	
Regular	Clark	King, Martha P ES				
Regular	Clark	Lake, Robert E ES	X	X	X	
Regular	Clark	Lamping, Frank ES	X	X	X	
Regular	Clark	Lincoln ES	X	X	X	

Plan	District	School Name	Facility Limitation	Difficulty Hiring	Funding Limitation	Other
Regular	Clark	Long, Walter V ES	X	X	X	
Regular	Clark	Lowman, Mary & Zel ES	X	X	X	
Regular	Clark	Lummis, William ES	X	X	X	
Regular	Clark	Lunt, Robert ES				
Regular	Clark	Lynch, Ann ES				
Regular	Clark	Mack, Nate ES	X	X	X	
Regular	Clark	Mackey, Jo ES	X	X	X	
Regular	Clark	Manch, J E ES	X	X	X	
Regular	Clark	Martinez, Reynaldo L ES	X	X	X	
Regular	Clark	Mathis, Dr. Beverly S ES	X	X	X	
Regular	Clark	May, Ernest ES	X	X	X	
Regular	Clark	McCall, Quannah ES	X	X	X	
Regular	Clark	McCaw, Gordon ES	X	X	X	
Regular	Clark	McDoniel, Estes M ES	X	X	X	
Regular	Clark	McMillan, James B ES				
Regular	Clark	McWilliams, J T ES	X	X	X	
Regular	Clark	Mendoza, John F ES	X	X	X	
Regular	Clark	Miller, Sandy Searles ES	X	X	X	
Regular	Clark	Mitchell, Andrew ES	X	X	X	
Regular	Clark	Moore, William K ES	X	X	X	
Regular	Clark	Morrow, Sue H ES	X	X	X	
Regular	Clark	Mountain View ES	X	X	X	
Regular	Clark	Neal, Joseph M ES	X	X	X	
Regular	Clark	Newton, Ulis ES	X	X	X	
Regular	Clark	NW Career-Technical Academy ES				
Regular	Clark	O Roarke, Thomas ES	X	X	X	
Regular	Clark	Ober, D'Vorre & Hal ES	X	X	X	
Regular	Clark	Ortwein, Dennis ES	X	X	X	
Regular	Clark	Paradise Prof Dev ES	X	X	X	
Regular	Clark	Park, John S ES	X	X	X	
Regular	Clark	Parson, Claude & Stella ES				
Regular	Clark	Perkins, Dr Claude G ES	X	X	X	
Regular	Clark	Perkins, Ute ES	X	X	X	
Regular	Clark	Petersen, Dean ES	X	X	X	
Regular	Clark	Piggott Academy ES	X	X	X	
Regular	Clark	Pittman, Vail ES	X	X	X	
Regular	Clark	Priest, Richard C ES	X	X	X	
Regular	Clark	Red Rock ES	X	X	X	
Regular	Clark	Reed, Doris M ES	X	X	X	
Regular	Clark	Reedom, Carolyn S ES	X	X	X	

Plan	District	School Name	Facility Limitation	Difficulty Hiring	Funding Limitation	Other
Regular	Clark	Rhodes, Betsy ES	X	X	X	
Regular	Clark	Ries, Aldeane Comito ES	X	X	X	
Regular	Clark	Roberts, Aggie ES				
Regular	Clark	Rogers, Lucille S ES	X	X	X	
Regular	Clark	Ronnow, C C ES				
Regular	Clark	Ronzone, Bertha ES	X	X	X	
Regular	Clark	Roundy, Dr C Owen ES	X	X	X	
Regular	Clark	Rowe, Lewis E ES	X	X	X	
Regular	Clark	Rundle, Richard ES	X	X	X	
Regular	Clark	Sandy Valley ES				
Regular	Clark	Scherkenbach, William & Mary ES	X	X	X	
Regular	Clark	Schorr, Steve ES	X	X	X	
Regular	Clark	Scott, Jesse D ES	X	X	X	
Regular	Clark	Sewell, C T ES				
Regular	Clark	Simmons, Eva G ES	X	X	X	
Regular	Clark	Smalley, James E & A Rae ES	X	X	X	
Regular	Clark	Smith, Hal ES	X	X	X	
Regular	Clark	Smith, Helen M ES	X	X	X	
Regular	Clark	Snyder, Don & Dee ES	X	X	X	
Regular	Clark	Snyder, William E ES	X	X	X	
Regular	Clark	Squires, C P ES	X	X	X	
Regular	Clark	Stanford ES				
Regular	Clark	Staton, Ethel W ES	X	X	X	
Regular	Clark	Steele, Judith D ES	X	X	X	
Regular	Clark	Stevens, Josh ES	X	X	X	
Regular	Clark	Stuckey, Evelyn ES	X	X	X	
Regular	Clark	Sunrise Acres ES	X	X	X	
Regular	Clark	Tanaka, Wayne N ES	X	X	X	
Regular	Clark	Tarr, Sheila Academy of Int'l Studies ES	X	X	X	
Regular	Clark	Tartan, John ES				
Regular	Clark	Tate, Myrtle ES	X	X	X	
Regular	Clark	Taylor, Glen C ES	X	X	X	
Regular	Clark	Taylor, Robert L ES	X	X	X	
Regular	Clark	Thiriot, Joseph E ES	X	X	X	
Regular	Clark	Thomas, Ruby S ES				
Regular	Clark	Thompson, Sandra L ES	X	X	X	
Regular	Clark	Thorpe, Jim ES	X	X	X	
Regular	Clark	Tobler, R E ES	X	X	X	
Regular	Clark	Tomiyasu, Bill Y ES	X	X	X	
Regular	Clark	Treem, Harriet ES	X	X	X	

Plan	District	School Name	Facility Limitation	Difficulty Hiring	Funding Limitation	Other
Regular	Clark	Triggs, Vincent L ES				
Regular	Clark	Twin Lakes ES				
Regular	Clark	Twitchell, Neil C ES	X	X	X	
Regular	Clark	Ullom, J M ES	X	X	X	
Regular	Clark	Vanderburg, John ES	X	X	X	
Regular	Clark	Vassiliadis, Billy & Rosemary ES	X	X	X	
Regular	Clark	Vegas Verdes ES	X	X	X	
Regular	Clark	Virgin Valley ES	X	X	X	
Regular	Clark	Walker, J Marlan Int'l School ES	X	X	X	
Regular	Clark	Wallin, Shirley & Bill ES	X	X	X	
Regular	Clark	Ward, Gene ES	X	X	X	
Regular	Clark	Ward, Kitty McDonough ES	X	X	X	
Regular	Clark	Warren, Rose ES	X	X	X	
Regular	Clark	Wasden, Howard ES	X	X	X	
Regular	Clark	Watson, Fredric W ES	X	X	X	
Regular	Clark	Wengert, Cyril ES	X	X	X	
Regular	Clark	West Prep ES				
Regular	Clark	Whitney ES	X	X	X	
Regular	Clark	Wiener, Jr , Louis ES	X	X	X	
Regular	Clark	Wilhelm, Elizabeth ES	X	X	X	
Regular	Clark	Williams, Tom ES	X	X	X	
Regular	Clark	Williams, Wendell ES				
Regular	Clark	Wolfe, Eva ES	X	X	X	
Regular	Clark	Wolff, Elise L ES	X	X	X	
Regular	Clark	Woolley, Gwendolyn ES	X	X	X	
Regular	Clark	Wright, William V ES	X	X	X	
Regular	Clark	Wynn, Elaine ES	X	X	X	
Regular	Clark	NV Learning Academy ES				
Regular	Clark	Thompson, Tyrone ES	X	X	X	
Regular	Lincoln	Caliente Elem				
Regular	Lincoln	Panaca Elem	X	X	X	
Regular	Lincoln	Pioche Elem				
Regular	Lincoln	PVES	X	X	X	
Regular	Pershing	Lovelock Elementary School				X
Regular	Pershing	Imlay Elementary School				
Regular	Washoe	Alice Smith Elementary		X	X	
Regular	Washoe	Allen Elementary		X	X	
Regular	Washoe	Anderson Elementary		X	X	
Regular	Washoe	Beasley Elementary		X	X	
Regular	Washoe	Beck Elementary		X	X	

Plan	District	School Name	Facility Limitation	Difficulty Hiring	Funding Limitation	Other
Regular	Washoe	Bennett Elementary		X	X	
Regular	Washoe	Booth Elementary		X	X	
Regular	Washoe	Brown Elementary		X	X	
Regular	Washoe	Cannan Elementary		X	X	
Regular	Washoe	Caughlin Ranch Elementary		X	X	
Regular	Washoe	Corbett Elementary		X	X	
Regular	Washoe	Desert Heights Elementary		X	X	
Regular	Washoe	Diedrichsen Elementary		X	X	
Regular	Washoe	Dodson Elementary		X	X	
Regular	Washoe	Donner Springs Elementary		X	X	
Regular	Washoe	Double Diamond Elementary		X	X	
Regular	Washoe	Drake Elementary				
Regular	Washoe	Duncan Elementary		X	X	
Regular	Washoe	Dunn Elementary		X	X	
Regular	Washoe	Elmcrest Elementary		X	X	
Regular	Washoe	Gomes Elementary		X	X	
Regular	Washoe	Gomm Elementary		X	X	
Regular	Washoe	Greenbrae Elementary		X	X	
Regular	Washoe	Hall Elementary		X	X	
Regular	Washoe	Hidden Valley Elementary		X	X	
Regular	Washoe	Huffaker Elementary				
Regular	Washoe	Hunsberger Elementary		X	X	
Regular	Washoe	Hunter Lake Elementary				
Regular	Washoe	Incline Elementary		X	X	
Regular	Washoe	Juniper Elementary		X	X	
Regular	Washoe	Kate Smith Elementary		X	X	
Regular	Washoe	Lemelson Elementary				
Regular	Washoe	Lemmon Valley Elementary		X	X	
Regular	Washoe	Lenz Elementary		X	X	
Regular	Washoe	Lincoln Park Elementary		X	X	
Regular	Washoe	Loder Elementary		X	X	
Regular	Washoe	Mathews Elementary		X	X	
Regular	Washoe	Maxwell Elementary		X	X	
Regular	Washoe	Melton Elementary		X	X	
Regular	Washoe	Mitchell Elementary		X	X	
Regular	Washoe	Moss Elementary		X	X	
Regular	Washoe	Mount Rose Elementary		X	X	
Regular	Washoe	Natchez Elementary				
Regular	Washoe	Palmer Elementary		X	X	
Regular	Washoe	Peavine Elementary		X	X	

Plan	District	School Name	Facility Limitation	Difficulty Hiring	Funding Limitation	Other
Regular	Washoe	Pleasant Valley Elementary		X	X	
Regular	Washoe	Risley Elementary		X	X	
Regular	Washoe	Sepulveda Elementary		X	X	
Regular	Washoe	Silver Lake Elementary		X	X	
Regular	Washoe	Smithridge Elementary		X	X	
Regular	Washoe	Spanish Springs Elementary		X	X	
Regular	Washoe	Stead Elementary		X	X	
Regular	Washoe	Sun Valley Elementary		X	X	
Regular	Washoe	Taylor Elementary				
Regular	Washoe	Towles Elementary		X	X	
Regular	Washoe	Van Gorder Elementary		X	X	
Regular	Washoe	Verdi Elementary		X	X	
Regular	Washoe	Veterans Elementary				
Regular	Washoe	Warner Elementary		X	X	
Regular	Washoe	Westergard Elementary		X	X	
Regular	Washoe	Whitehead Elementary		X	X	
Regular	Washoe	Winnemucca Elementary				
Regular	Washoe	Poulakidas Elementary	X	X	X	
Regular	Washoe	Bohach Elementary		X	X	

Concluding Remarks

In the first quarter of FY21, there was a decrease of 96 variances, equivalent to a 10% decrease in the overall number of class size ratio variances requested compared to the fourth quarter of FY20. Kindergarten, first, second, third, and fifth grades experienced decreases in the number of variances requested compared to the fourth quarter of FY20, with decreases of 57, 11, 7, 19 and 7 respectively. Kindergarten experienced the most significant decrease of 17.2%. The total number of students reported in kindergarten through sixth grade for this period was 123,698. There were 6,418 teachers, which put the statewide average class size ratio at 19 pupils to 1 licensed teacher for the quarter.

The Department is committed to working with the State Board of Education and school districts to decrease the number of variance requests, particularly in high need schools. Questions may be directed to Megan Peterson via email at meganp@doe.nv.gov or by phone at 775-687-9236.